

# CONVENING A WORKGROUP TO ADDRESS MENTAL HEALTH NEEDS IN YOUR COUNTY

---

Yolanda L. Lewis, District Court Administrator  
Superior Court of Fulton County



# What Mental Health Looks Like

8x

Individuals with untreated mental health and substance abuse disorders are 8 times more likely to be incarcerated, often due to lack of access to appropriate crisis services and ongoing care.

17%

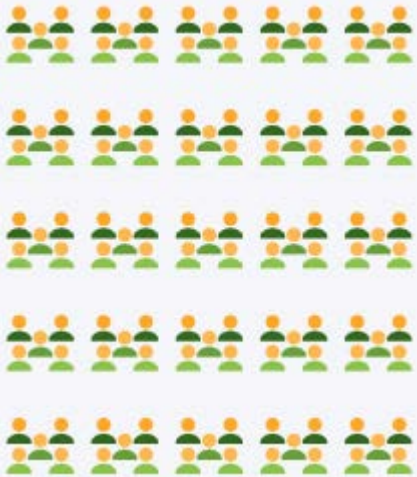
Of adults entering jails and state prisons have a serious mental health illness.

50%

Of prison and jail inmates in the United States have been diagnosed with a behavioral disorder.

40%

On any given day, there are approximately 2,500 offenders in Fulton County jail, of which 40% to 70% are mentally ill.



# Fulton County Justice and Mental Health Task Force

Bureau of Justice  
Assistance/DOJ

\$250,000

## Planning & Technical Assistance

- ❖ Carl Vinson Institute of Government at UGA
- ❖ Policy Research Associates
- ❖ Council for State Governments



# Five Helpful Considerations

1

- Assessing the Community Problem

2

- Identifying Targets and Agents of Change

3

- Creating the Catalyst

4

- Making the Most of State and National Connections

5

- Investing in the Issue

# Consideration 1: Assessing the Community Problem



# Sequential Mapping Exercise

- ❖ Two-day workshop to map the flow of people with mental illness through the criminal justice system



- ❖ Five workgroups were created to work on the priorities the Task Force identified to help safely reduce the prevalence of people with mental illness in jail
- ❖ Solid foundation for next steps of analysis

# Consideration 2: Identifying Targets & Agents of Change

- Atlanta City Detention Center
- Atlanta Police Department
- Atlanta Public Schools
- Atlanta/Fulton Pre-Arrest Diversion Initiative
- Behavioral Health Link Mobile Crisis
- Centers for Disease Control
- Central Atlanta Progress
- City of Atlanta Public Defender's Office/Solicitor's Office
- Department of Behavioral Health and Developmental Disabilities
- Department of Community Supervision
- Emory University, Psychiatry and Law Services
- Fulton County Board of Commissioner's
- Fulton County District Attorney's Office
- Fulton County Manager's Office
- St. Jude's Recovery Center
- Georgia Council on Substance Abuse
- Georgia Mental Health Consumers Network
- Georgia Public Defender Council
- Grady Health System
- Intervention Education Programs
- Magistrate Court of Fulton County
- MARTA Police
- Mary Hall Freedom House
- Mental Health America of Georgia
- Mercy Care
- Morehouse School of Medicine
- National Alliance on Mental Illness (NAMI) Georgia
- Southern Center for Human Rights
- St. Jude's Recovery Center
- Trinity Community Ministries

# Collaborative Change Agents

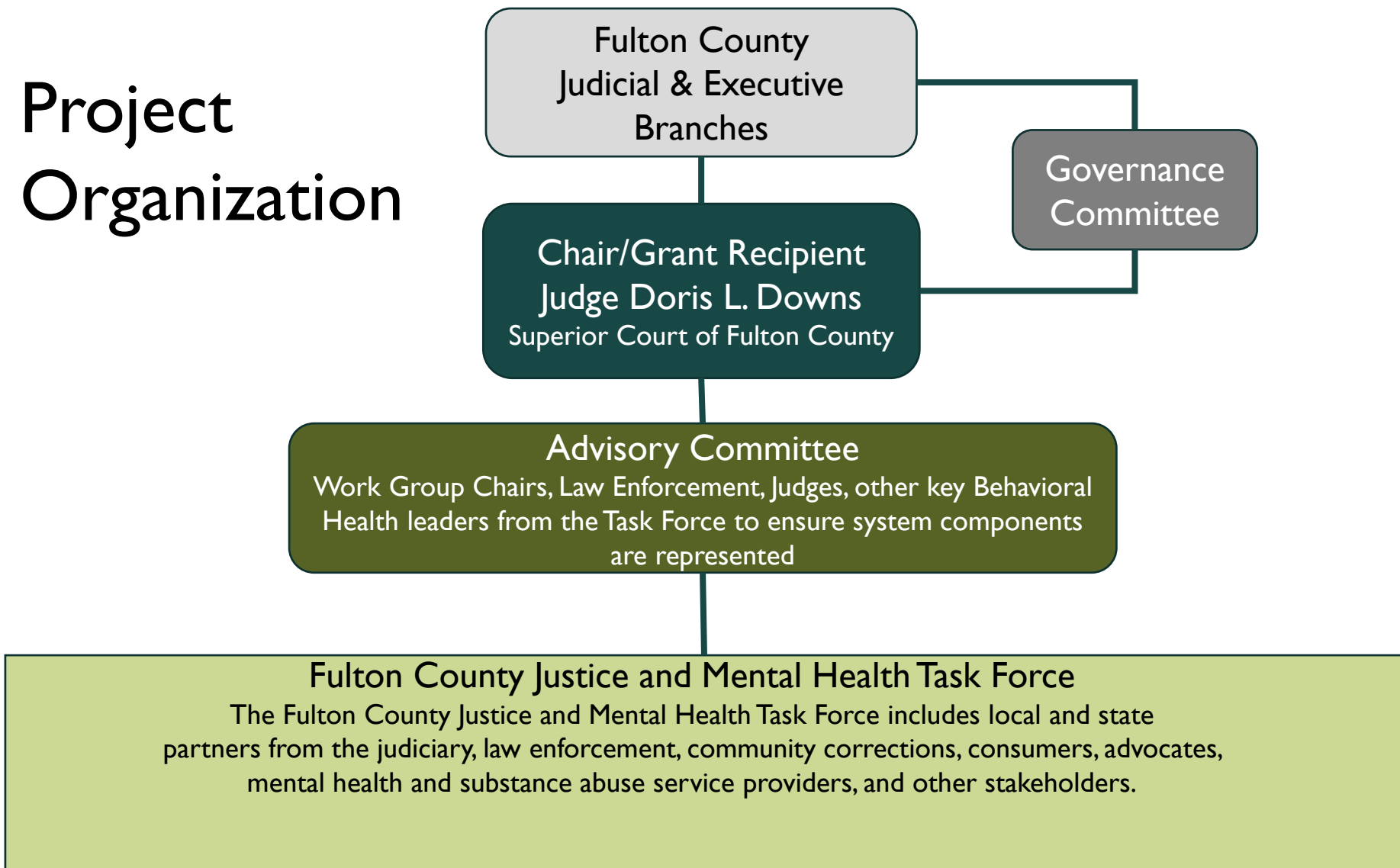


**Commissioner Joan P. Garner**

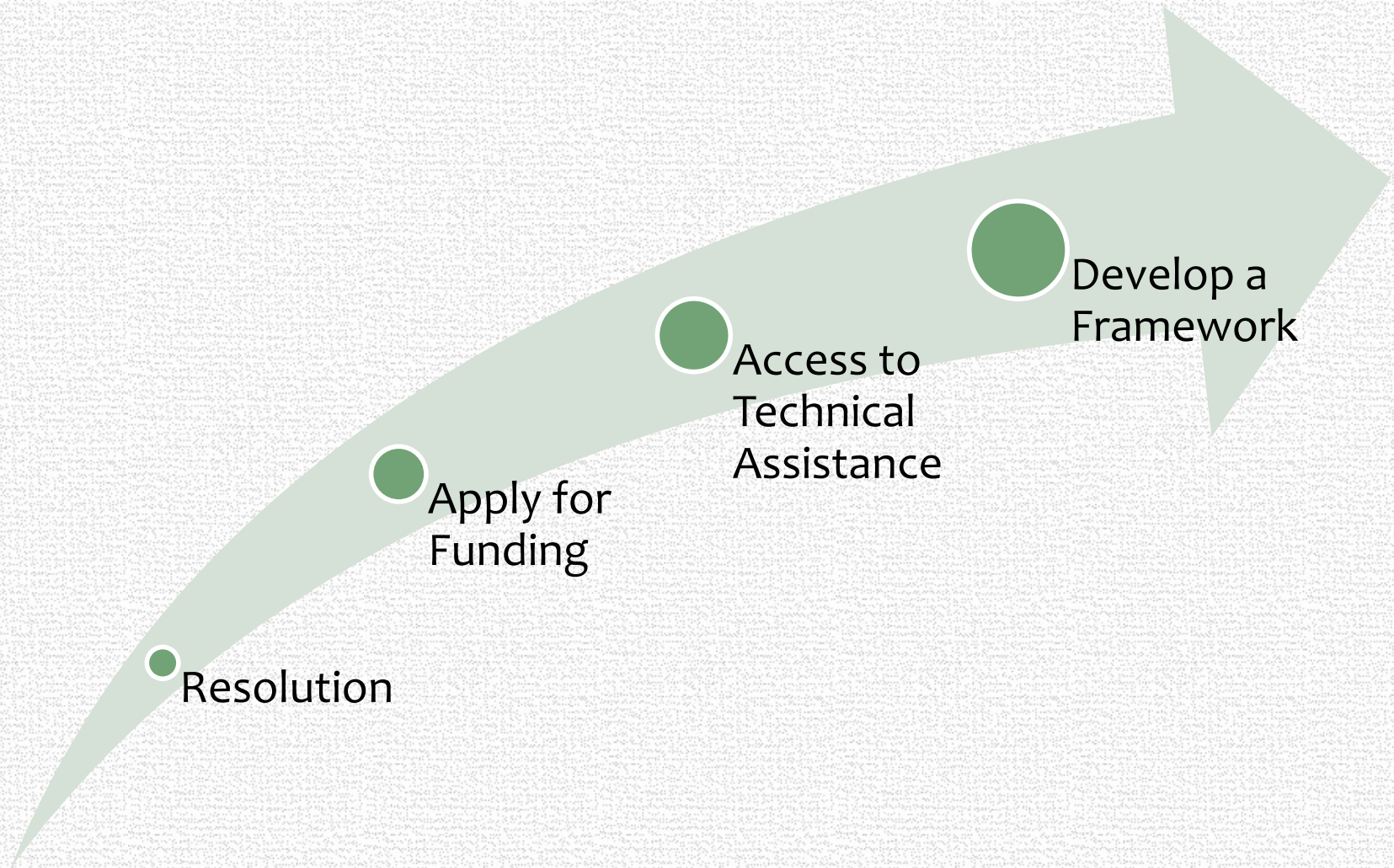




# Project Organization



# Consideration 3: Creating the Catalyst



# Consideration 4: Making the Most of State & National Connections



# Consideration 5: Investing in the Issue

- **Fulton County Justice Reinvestment Initiative:** The Board of Commissioners authorized the Justice Reinvestment Initiative in January 2017 to develop a system-wide plan to drive better outcomes across the justice agencies.
- Opportunities for future investment funding and increases include: grants, justice agencies' budget underruns, and operational efficiency gains.



REDUCTION IN  
ADMINISTRATIVE  
COSTS



REDUCTION IN  
CLERK COSTS

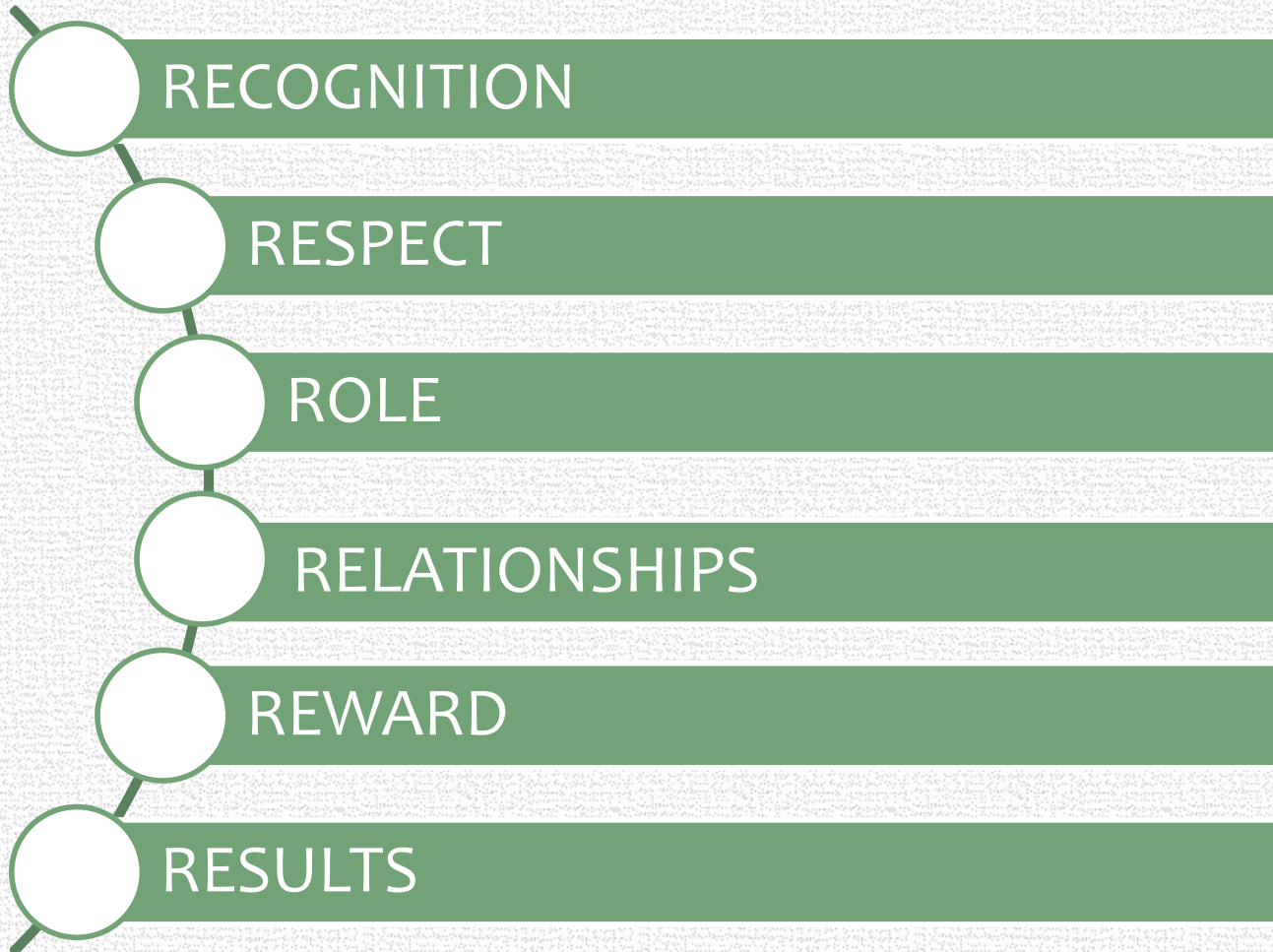


REDUCTION IN  
JAIL POPULATION



REDUCTION IN  
JAIL OPERATING  
COSTS

# 6 Tenets to Maintain Momentum



A public website was created as a repository for all project documents and meeting information:

[www.fultonstepsup.org](http://www.fultonstepsup.org)

